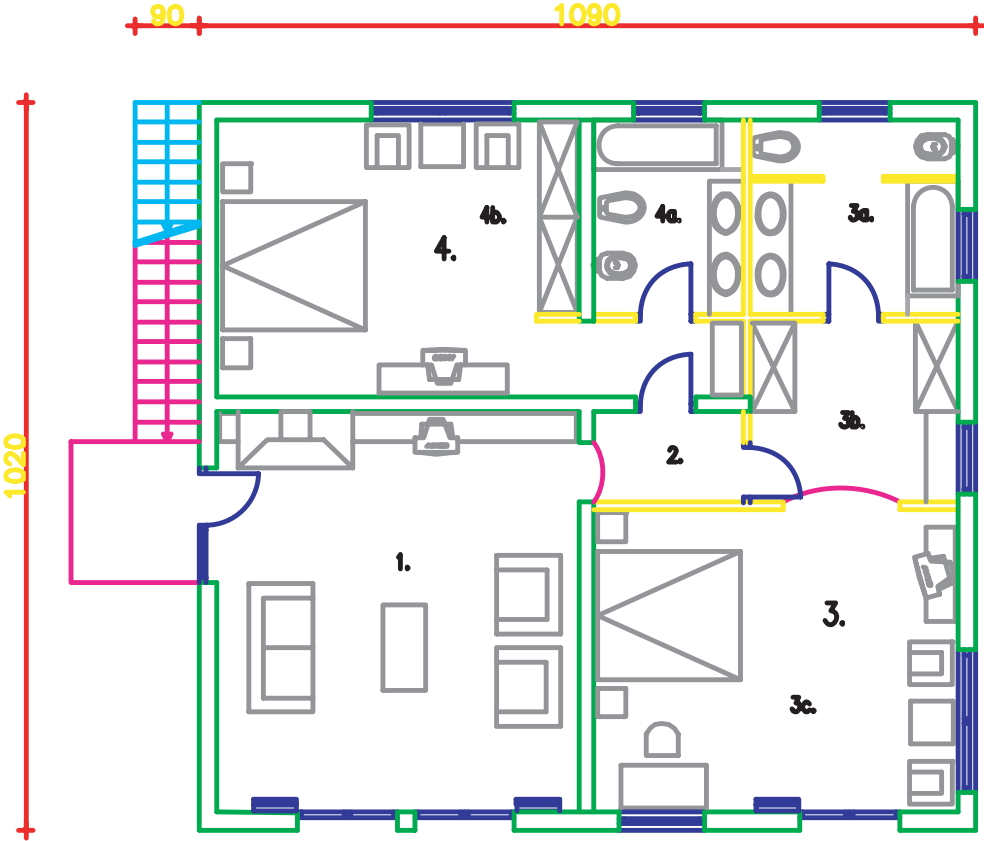


RESIDENTIAL VILLAS CHARACTERISTIC UNITS

1:100



GROUND FLOOR LAYOUT - SUITE FOR 4 PERSONS

LEGEND:

1. LIVING ROOM	P=28,5m ²
2. HALLWAY	P=2,70m ²
3. BEDROOM SECTION	P=37,0m ²
3a. BATHROOM	P=7,90m ²
3b. WARDROBE	P=7,40m ²
3c. BEDROOM	P=21,7m ²
4. BEDROOM SECTION	P=27,8m ²
4a. BATHROOM	P=5,70m ²
4b. BEDROOM	P=22,1m ²
TOTAL:	P=96,0m²